

REICHE & VOGEL

LEUCHTKUNST

BERLIN SO 36

KOTTBUSSE UFER 30

3073

BÜHNENBELEUCHTUNG

REICHE & VOGEL

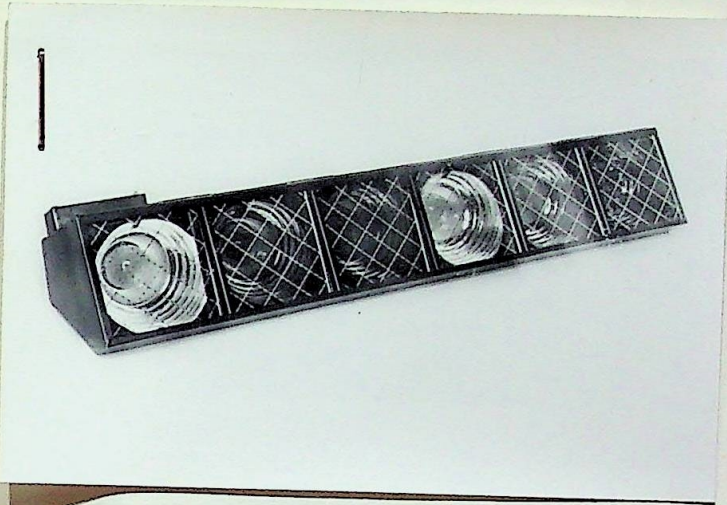
LEUCHTKUNST

BERLIN SO 36

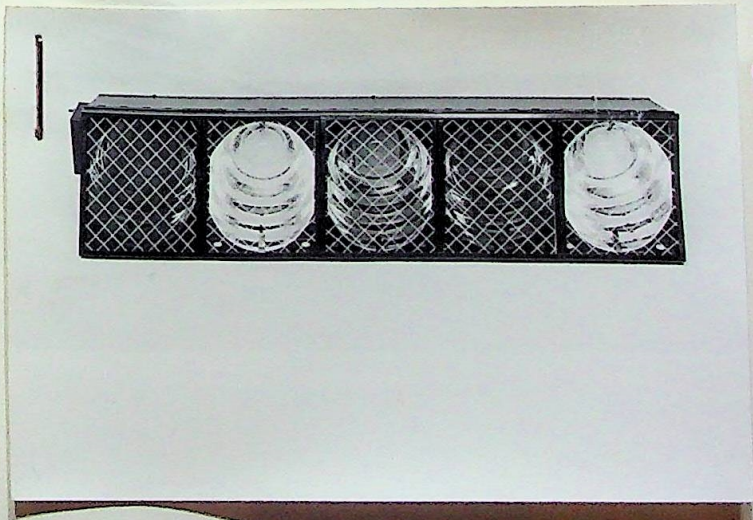
KOTTBUSSE UFER 30

Telefon 61 58 50

Telegr.-Adr. Lichtreflex Berlin



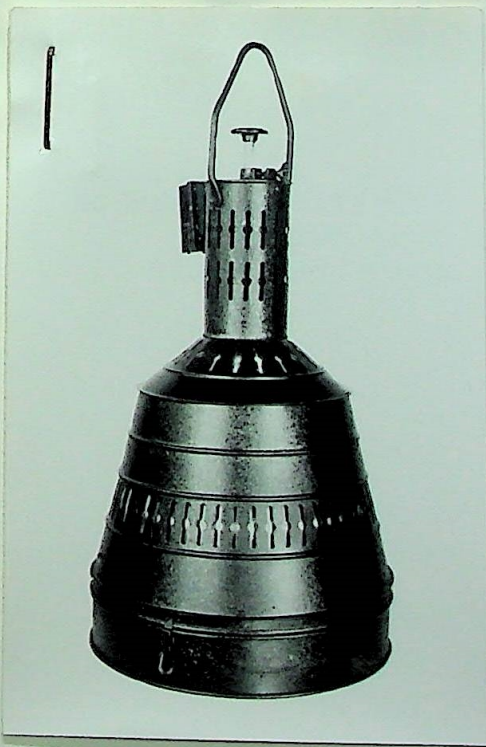
Pos. 1



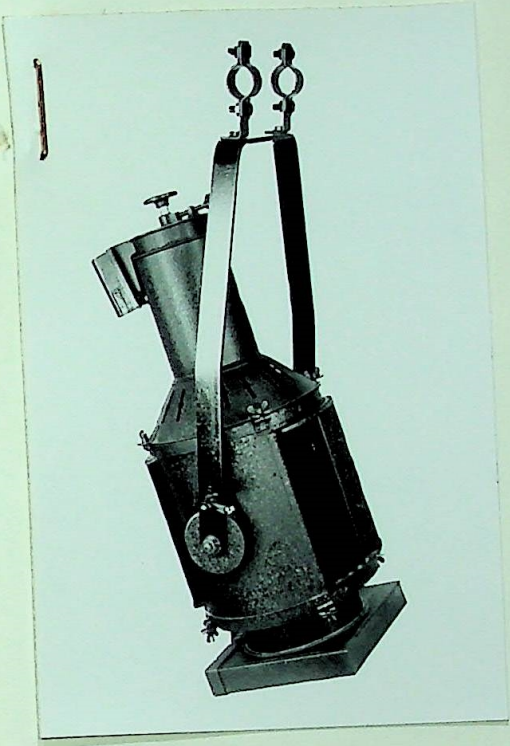
Pos. 1a



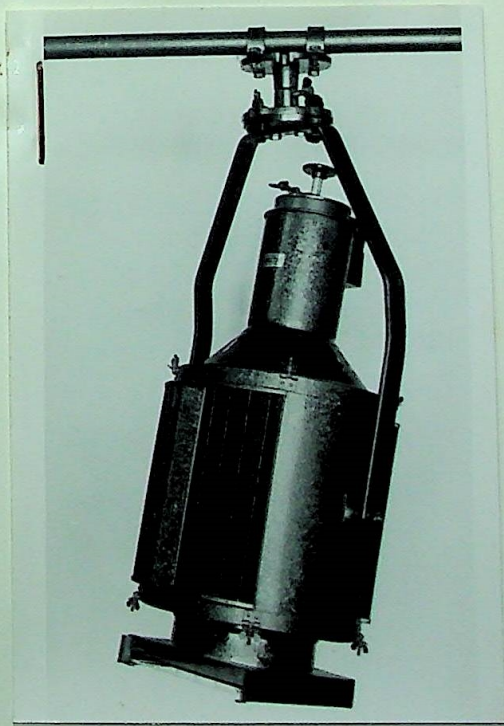
Pos. 2



Pos. 2a

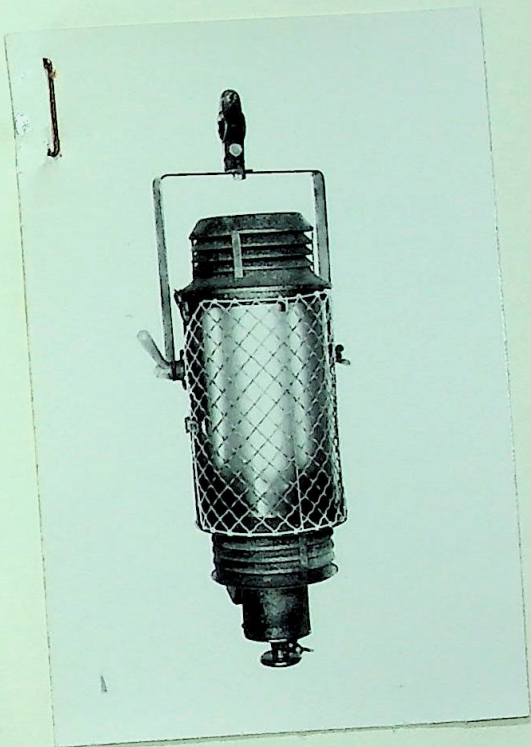


Pos. 3

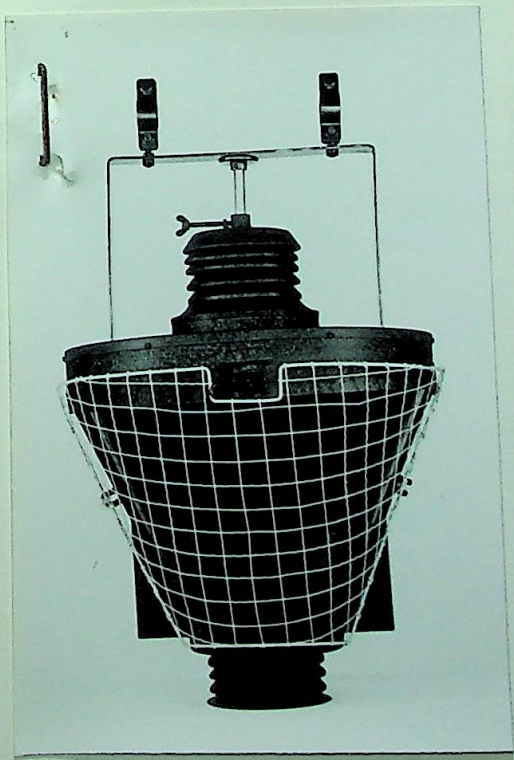


Pos. 4

Pos. 6



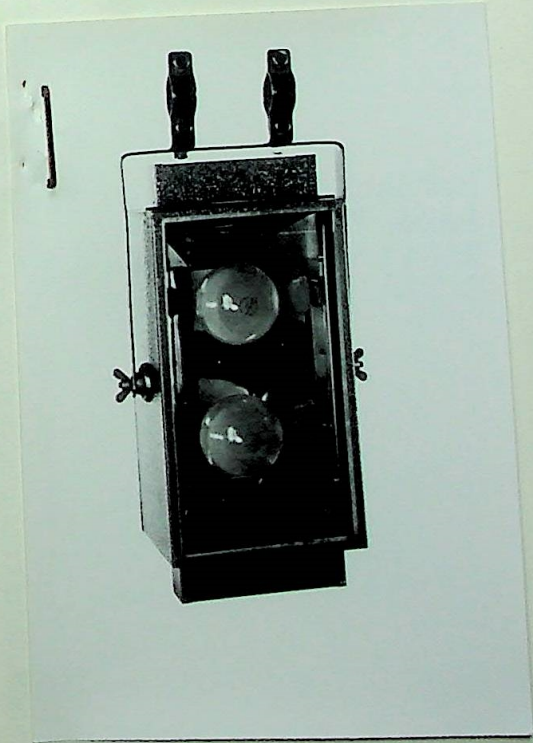
Pos. 8

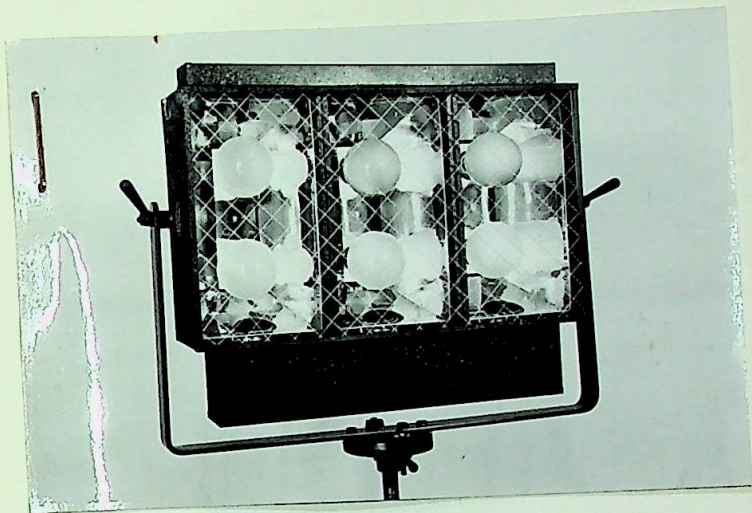


Pos. 9



Pos. 10

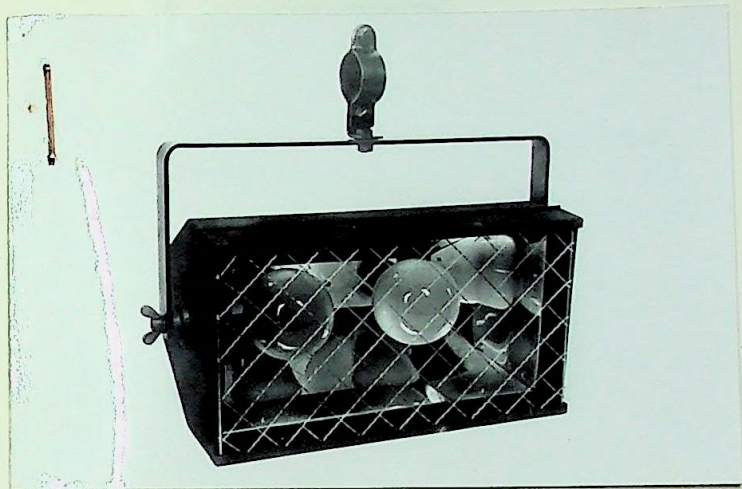




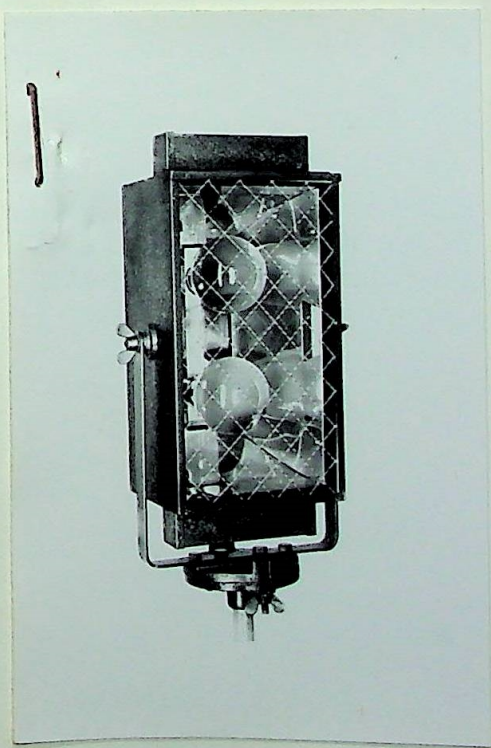
Pos. 10a

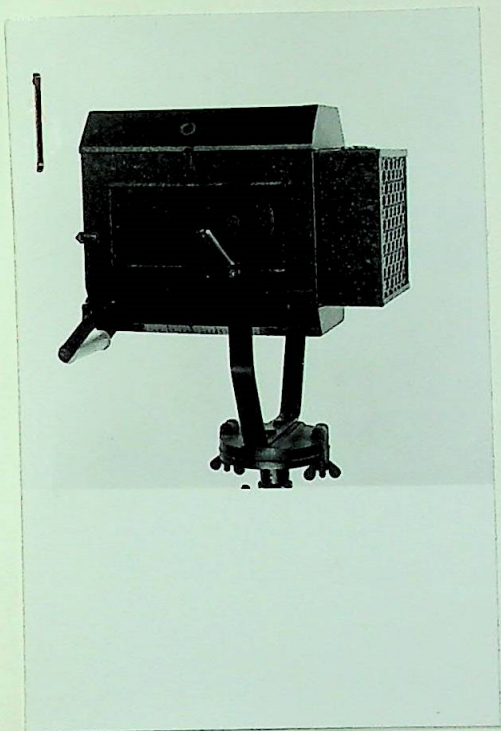


Pos. 11

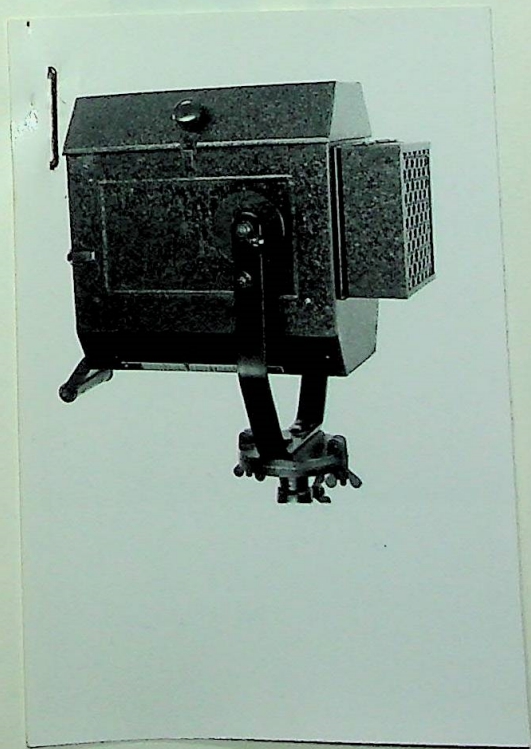


Pos. 12

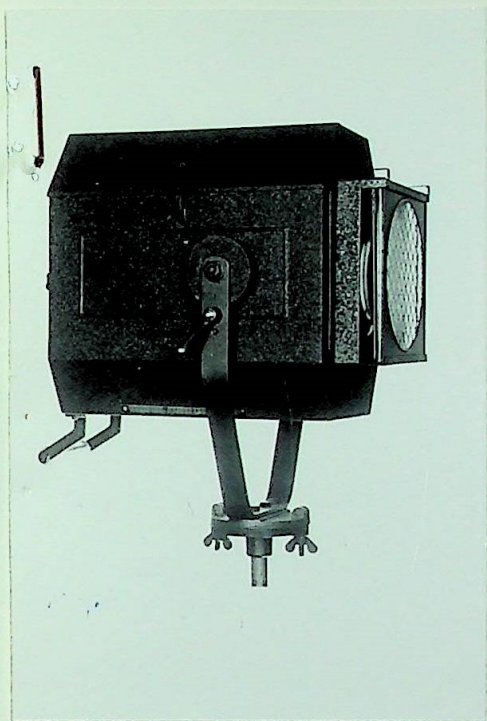




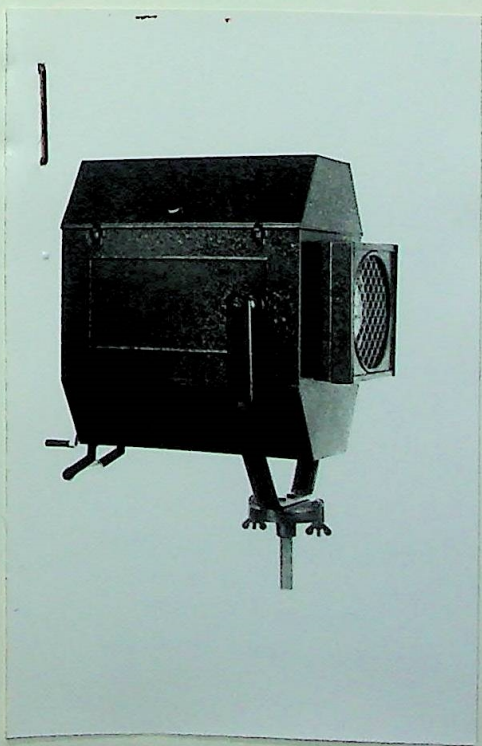
1
\$05.13



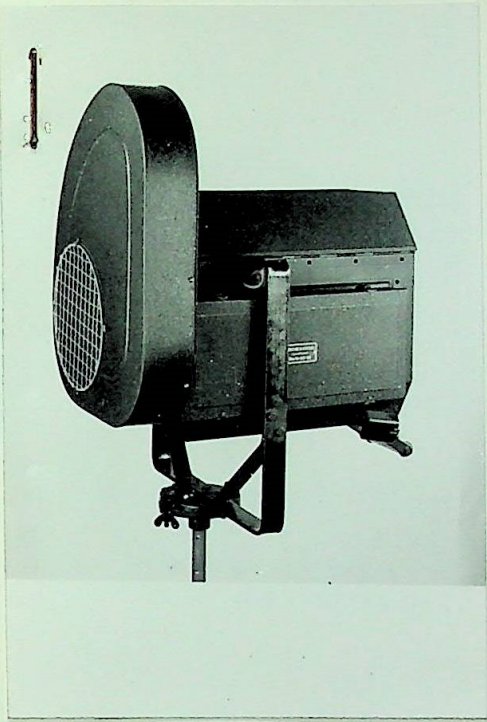
\$05.14



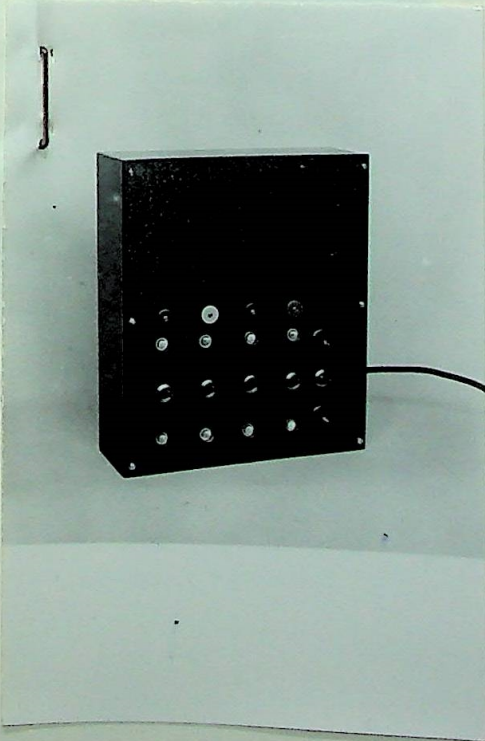
Pos. 16

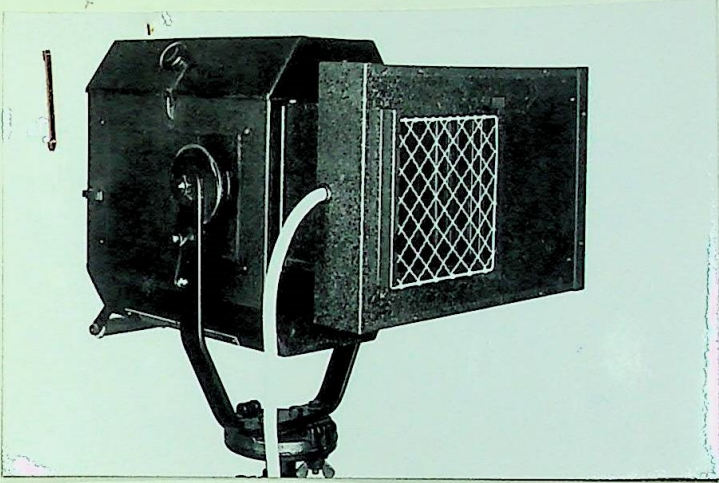


Pos. 18

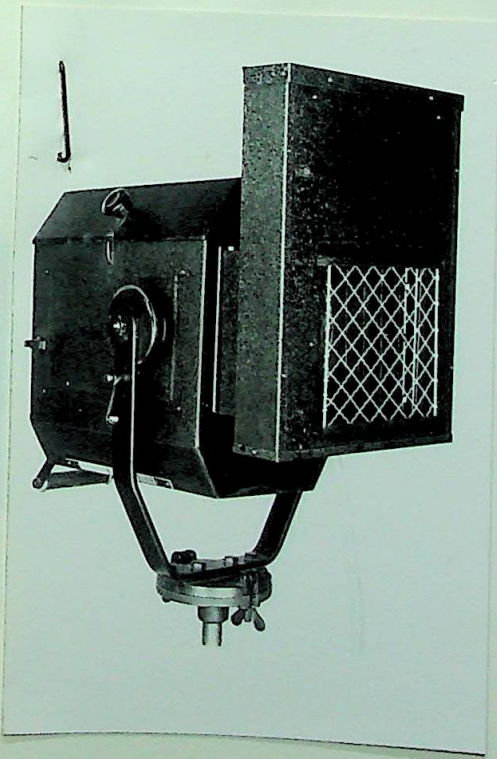


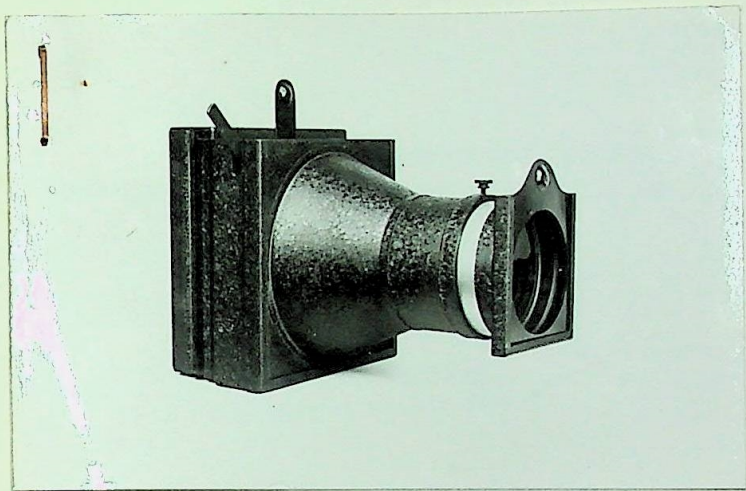
Pos. 19



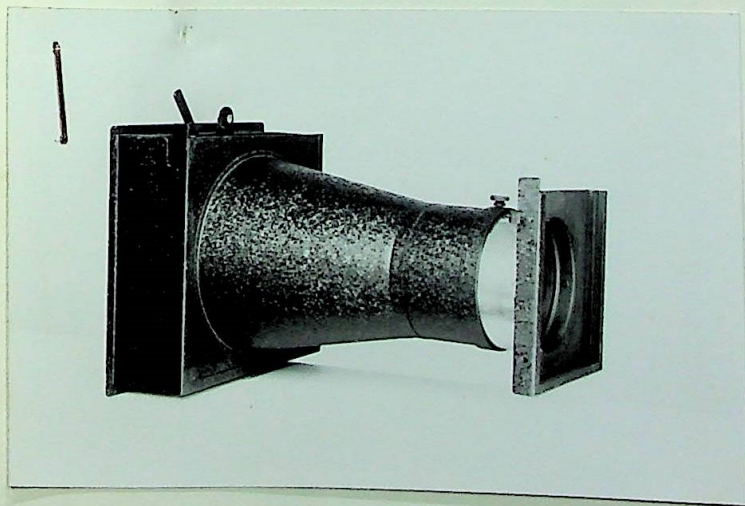


209.192

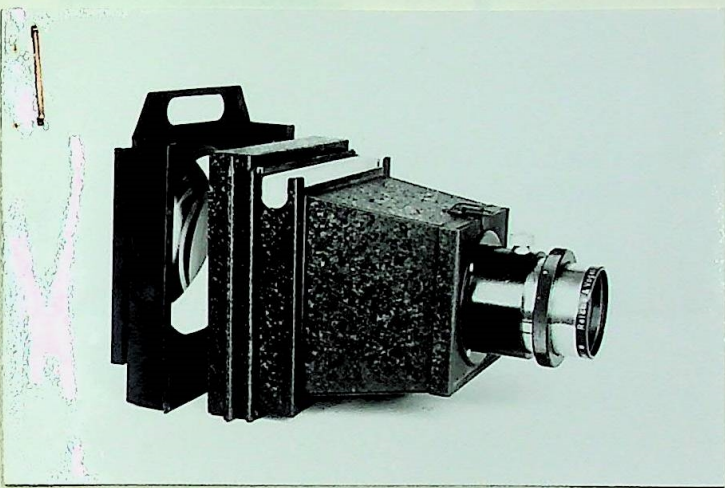




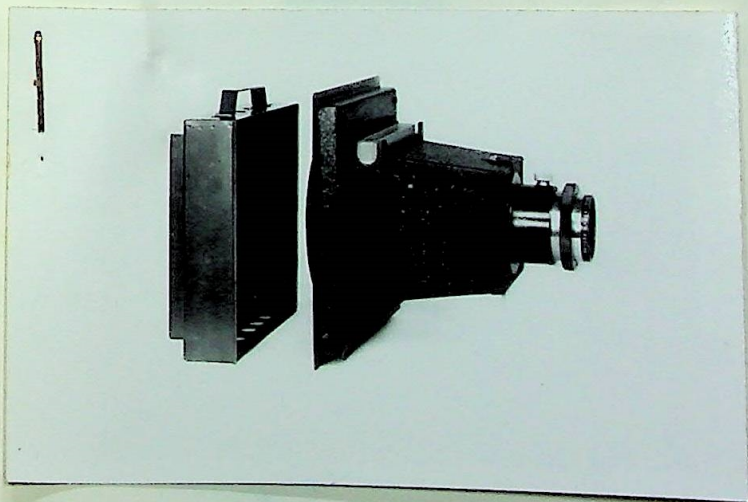
Pos. 20 a



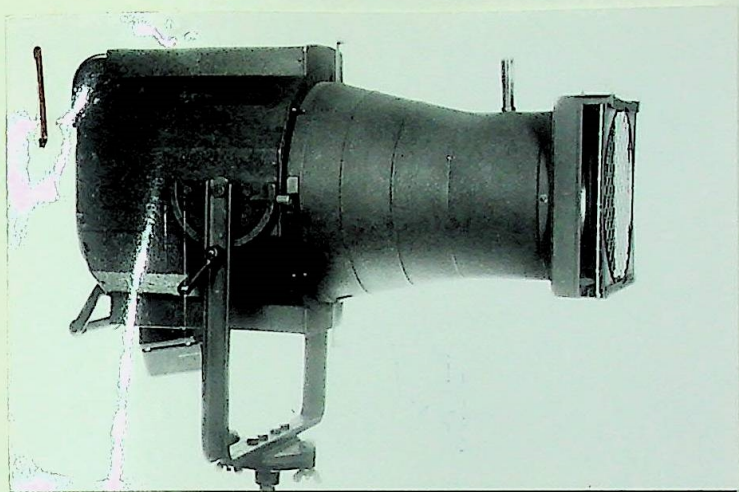
Pos. 20 b



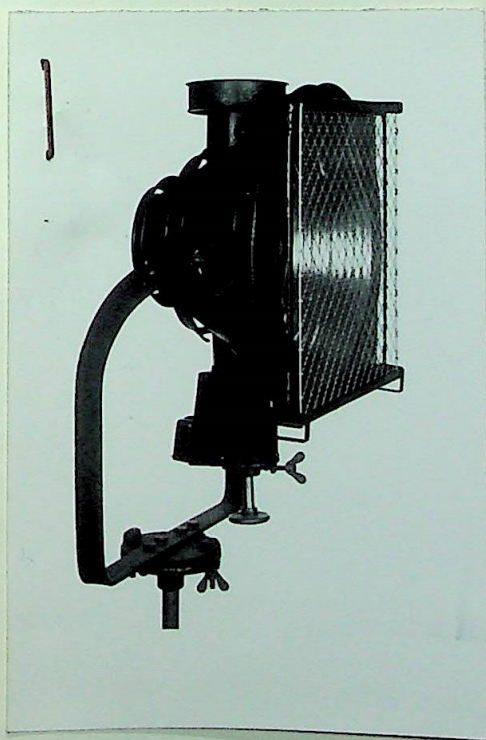
Pos. 20c



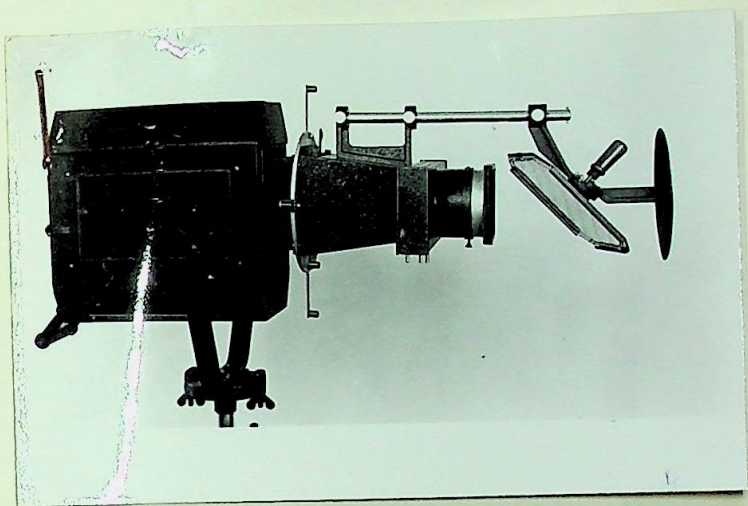
Pos. 200d



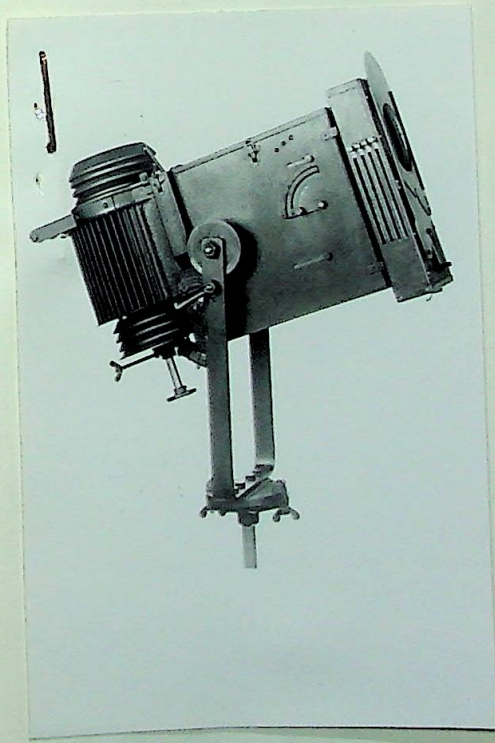
Pos. 21



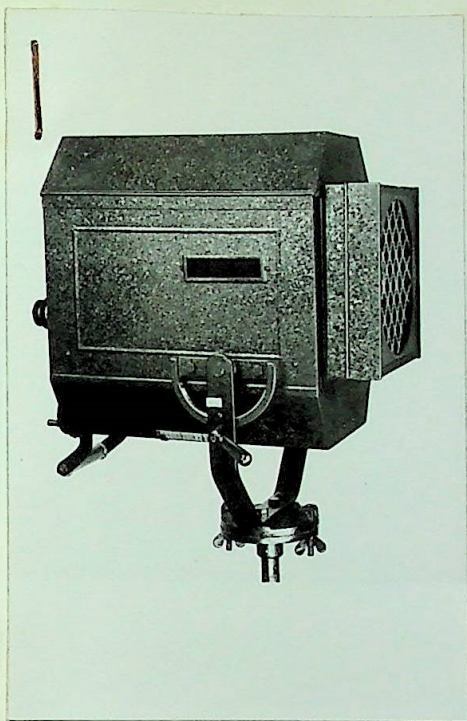
Pos. 22



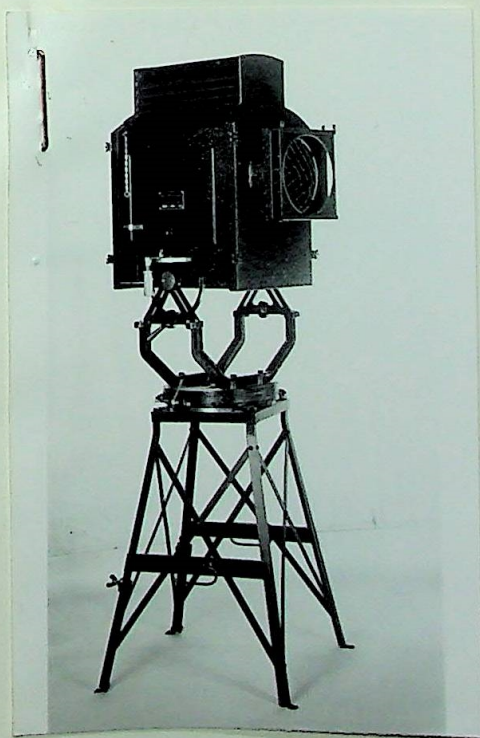
Pos. 23



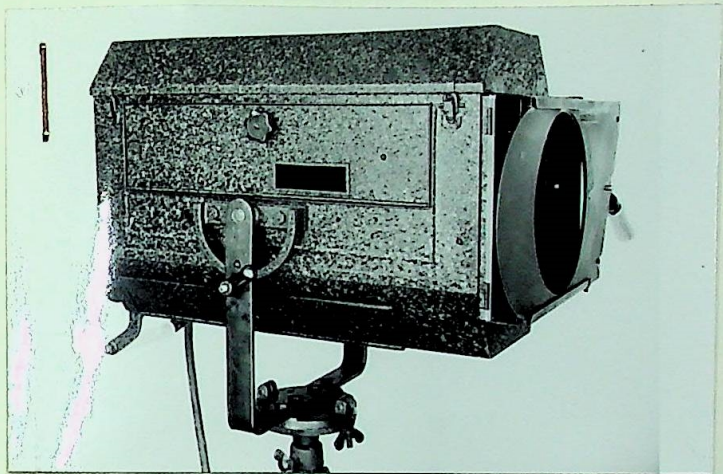
Pos. 24



Pos. 25



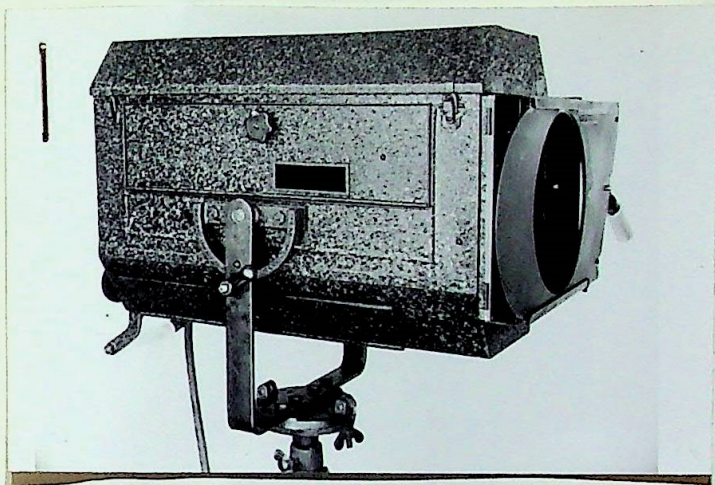
Pos. 26



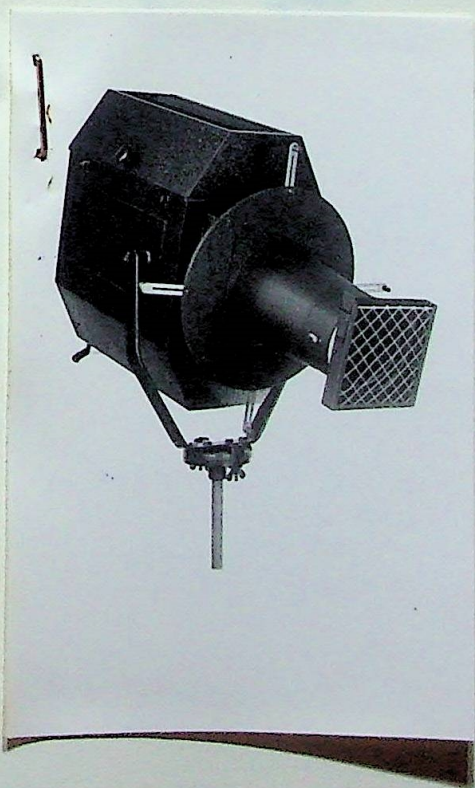
Pos. 27



Pos. 28



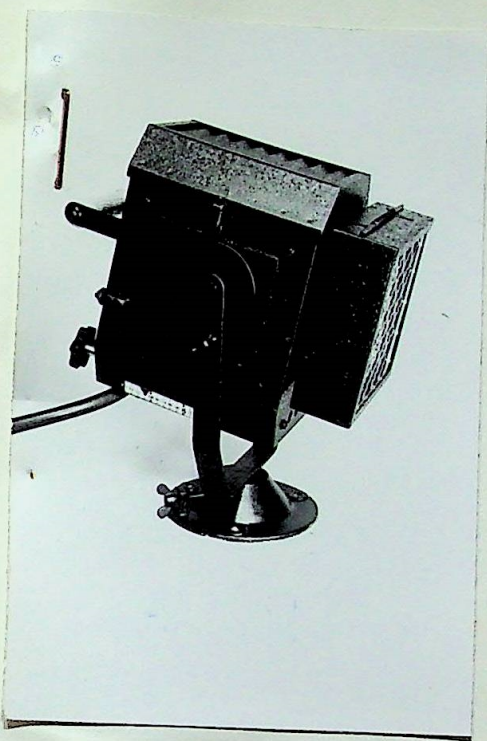
Pos. 27



Pos. 28



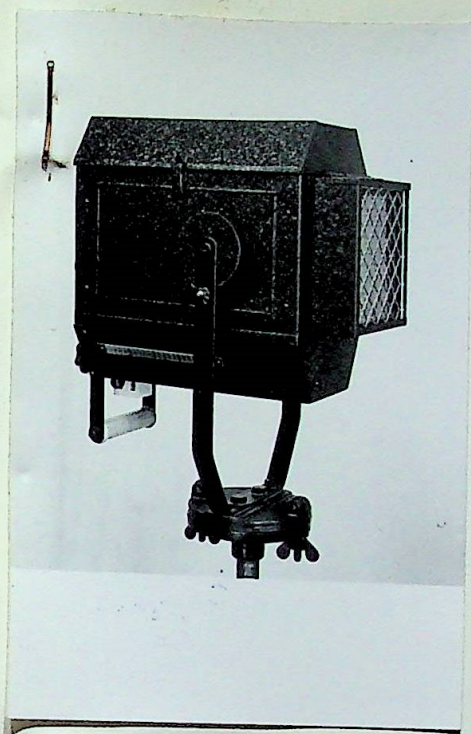
Pos. 29

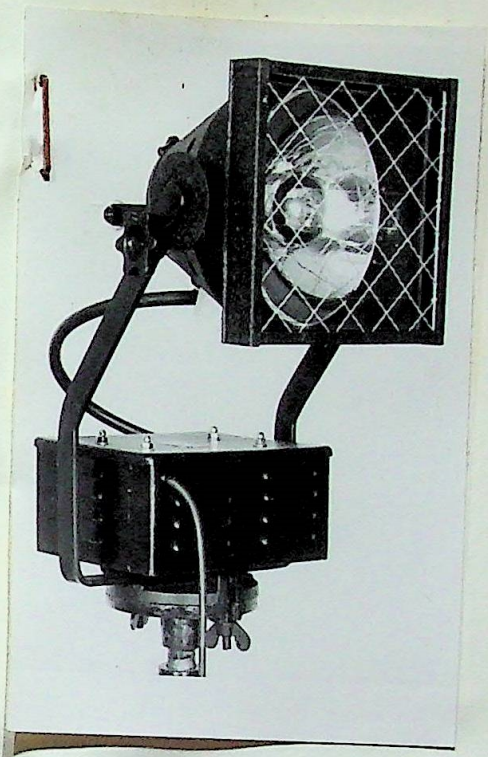


Gov. 31



901.32

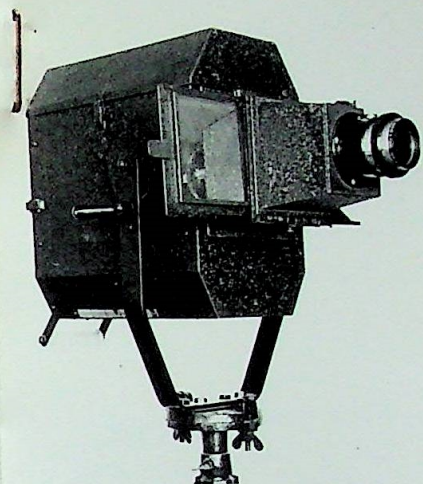




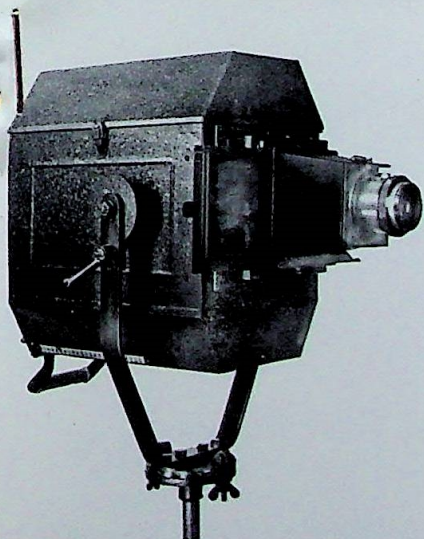
Pos. 33



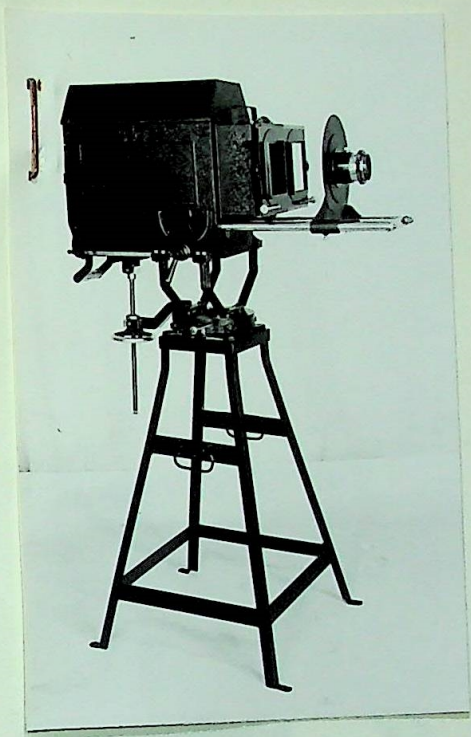
Pos. 34



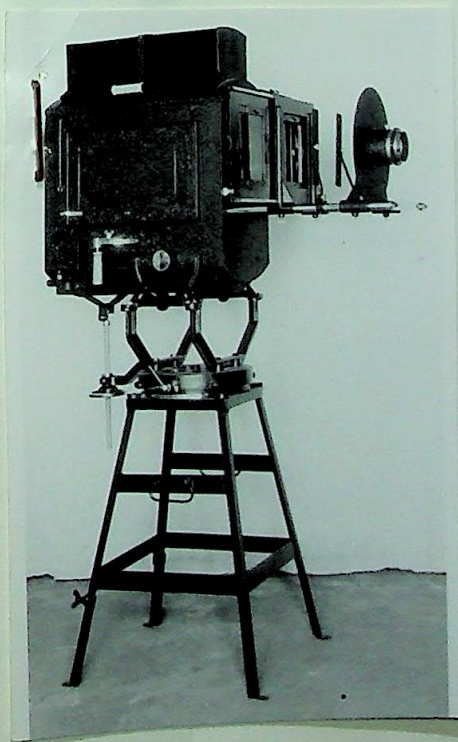
Pos. 35



Pos. 36

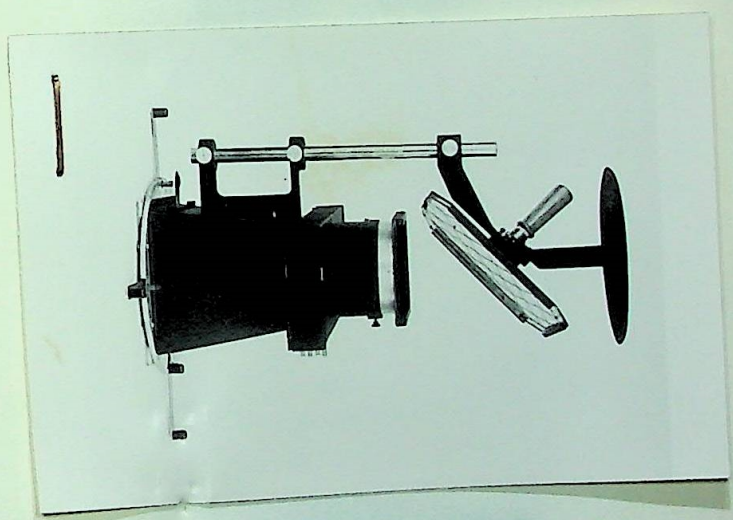


Pos. 37



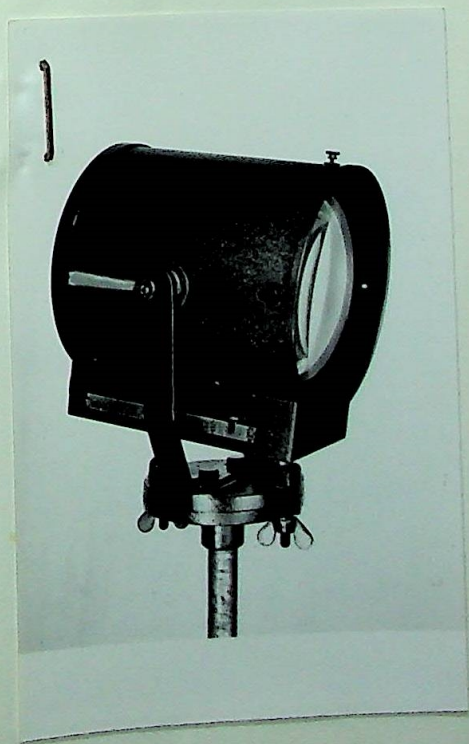
Pos. 38

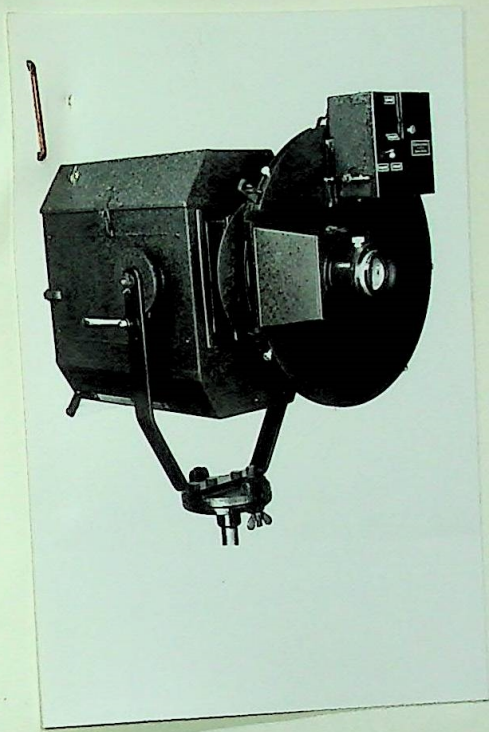
Pos. 39



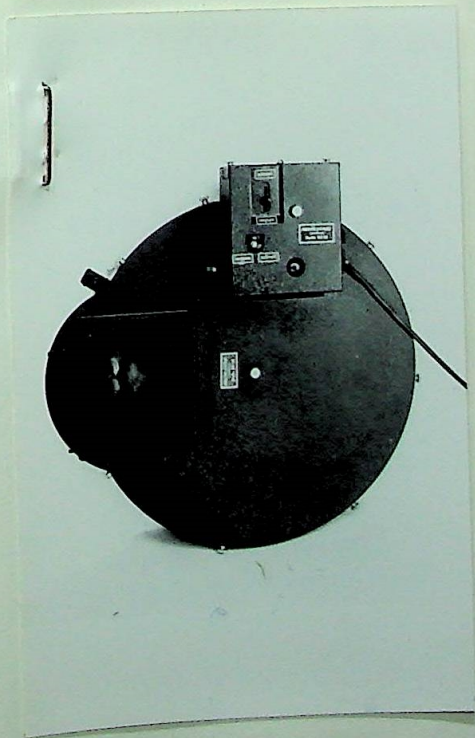


Pos. 48 1/2

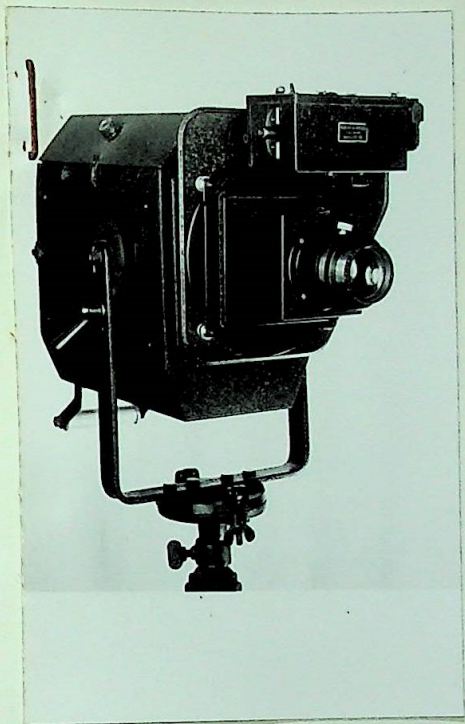




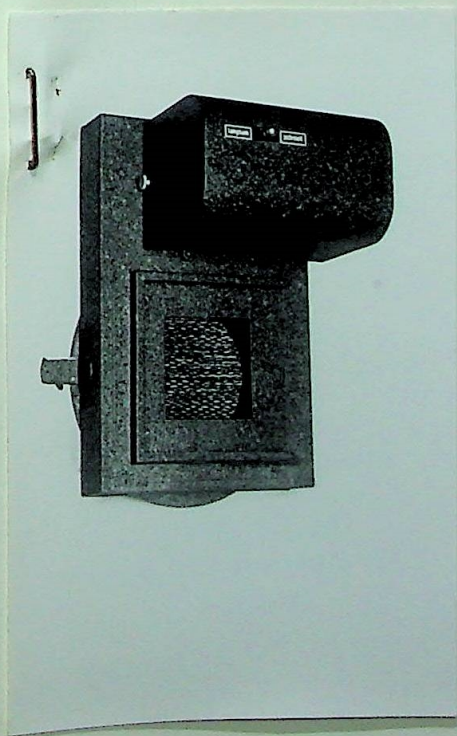
Pos. 41



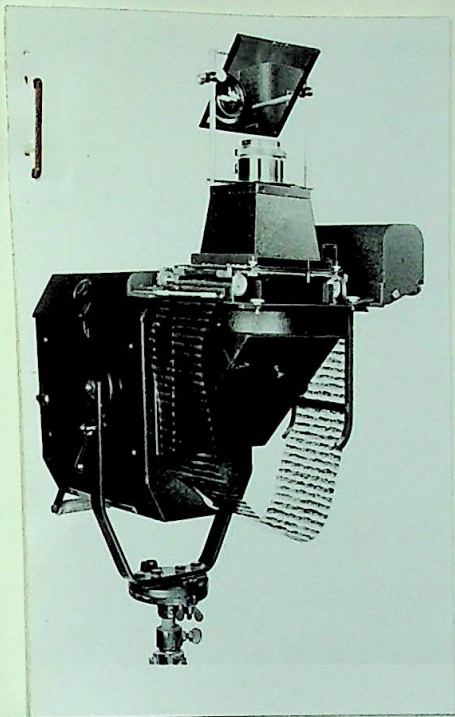
Pos. 42



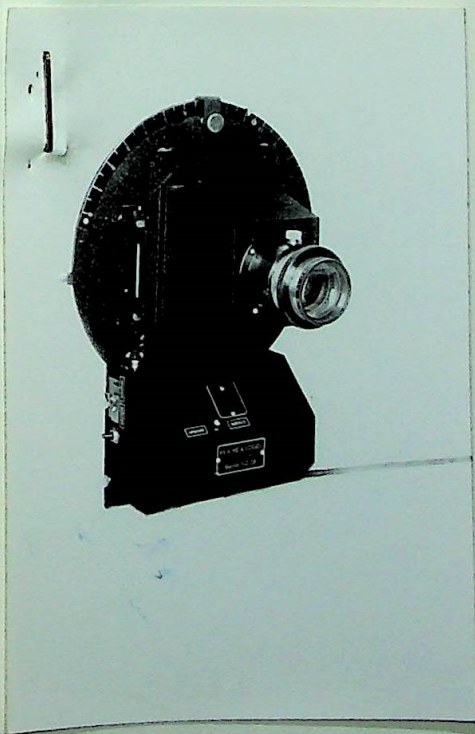
Pos. 43



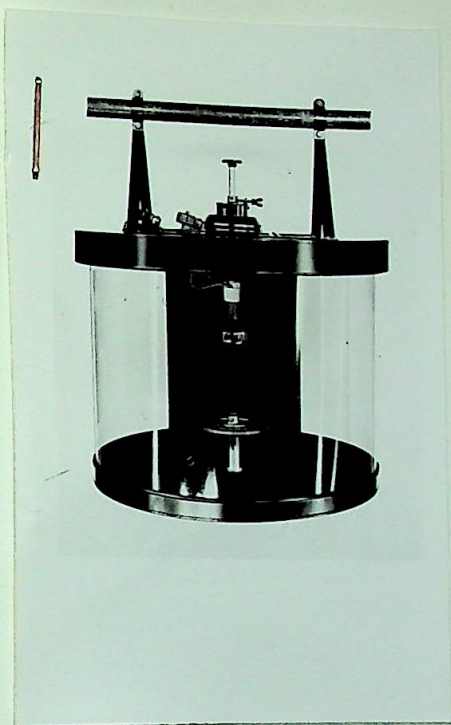
Pos. 44



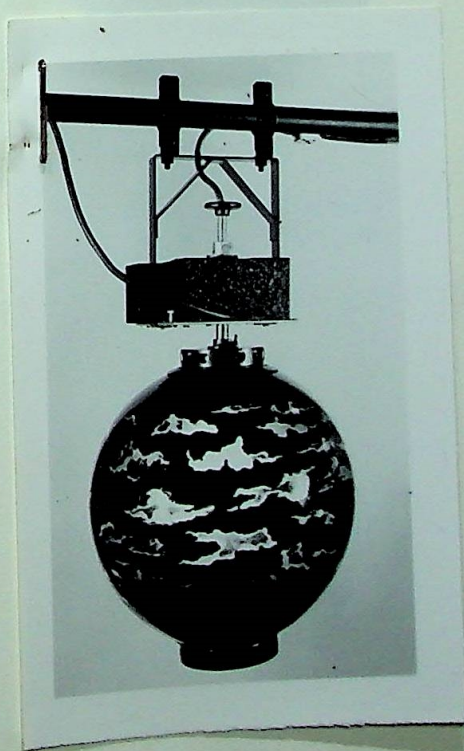
Pos. 45



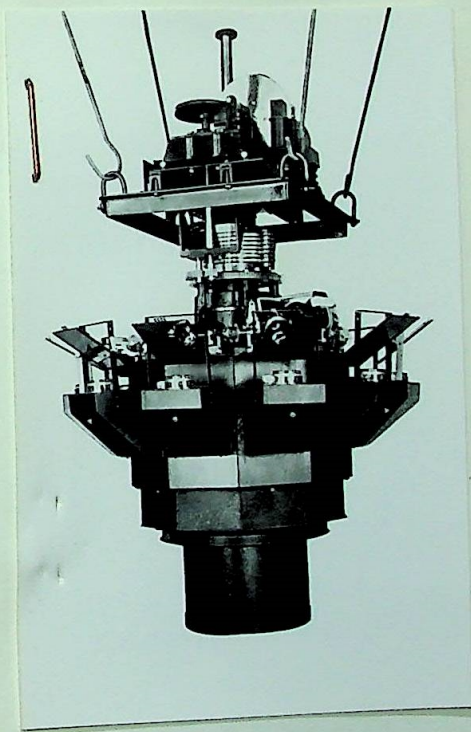
Pos. 46



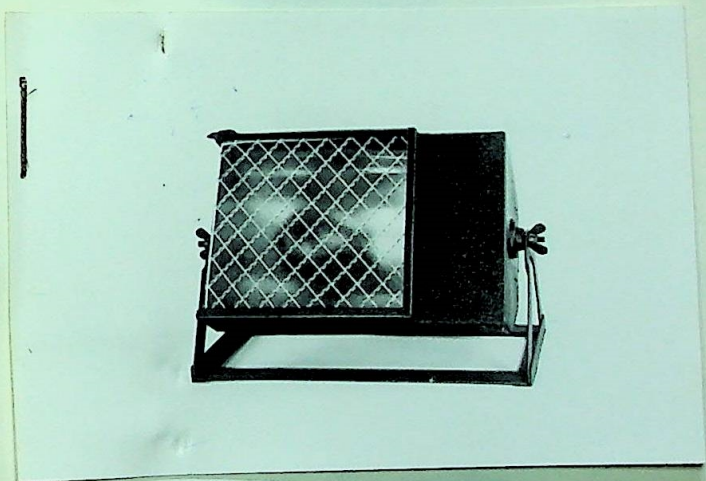
Pos. 47



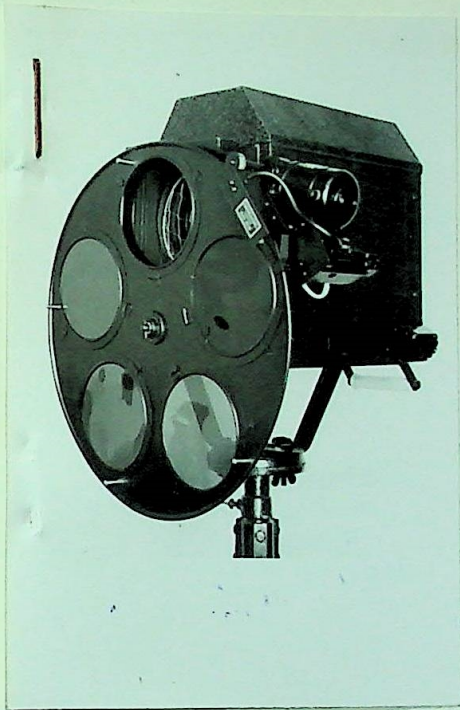
Pos. 49



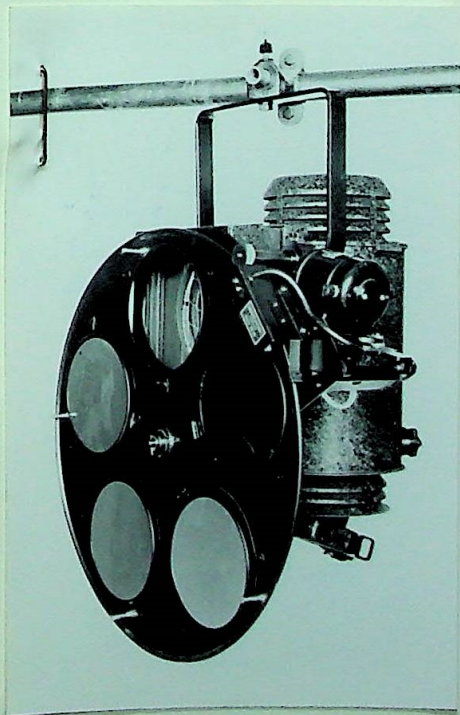
205.50



Pos. 52



Pos. 53a





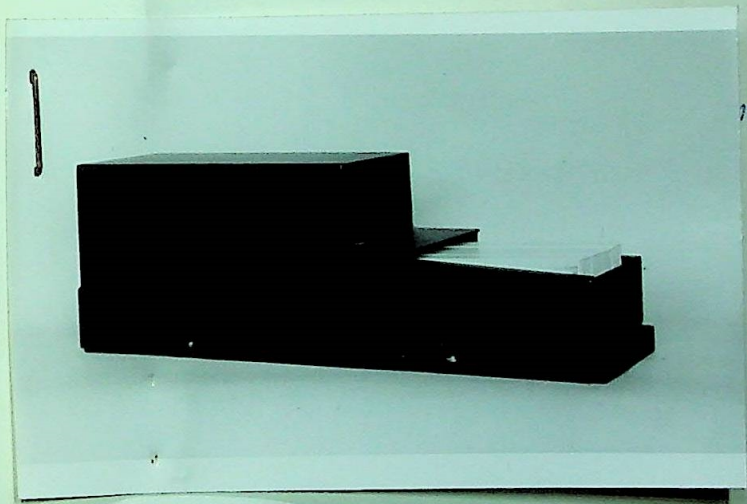
Pos. 54



Pos. 55



Pos. 56



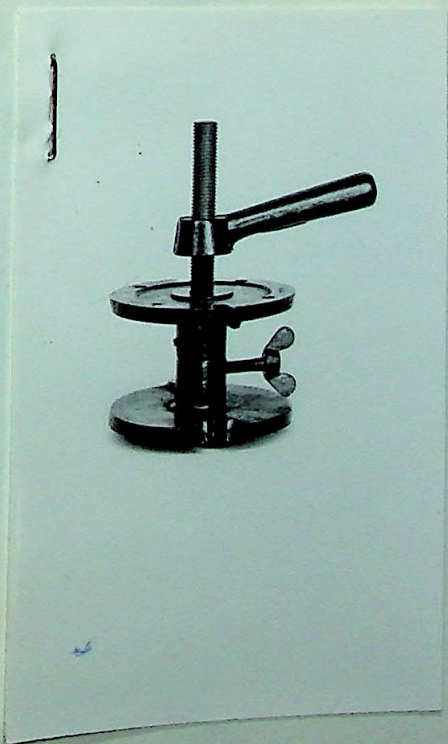
75.57



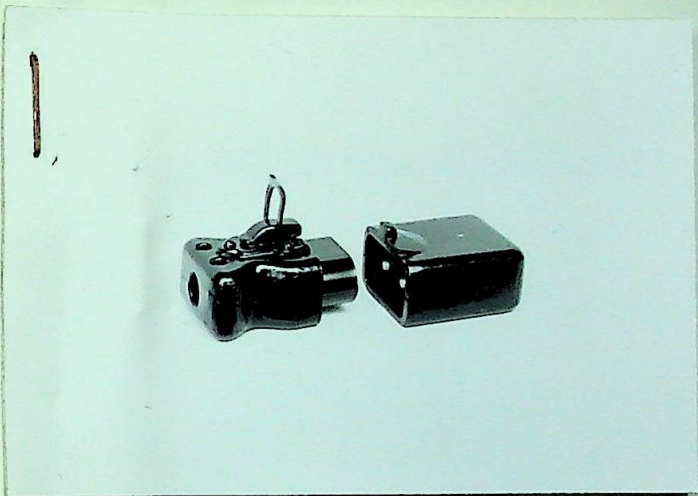
205.58



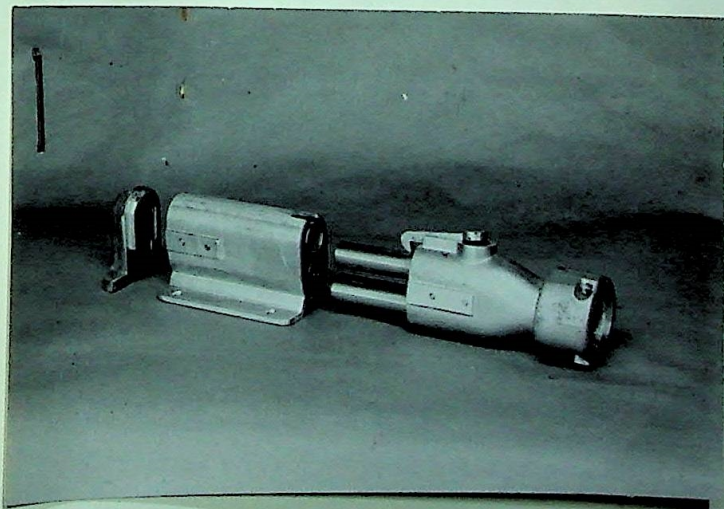
Pos. 59



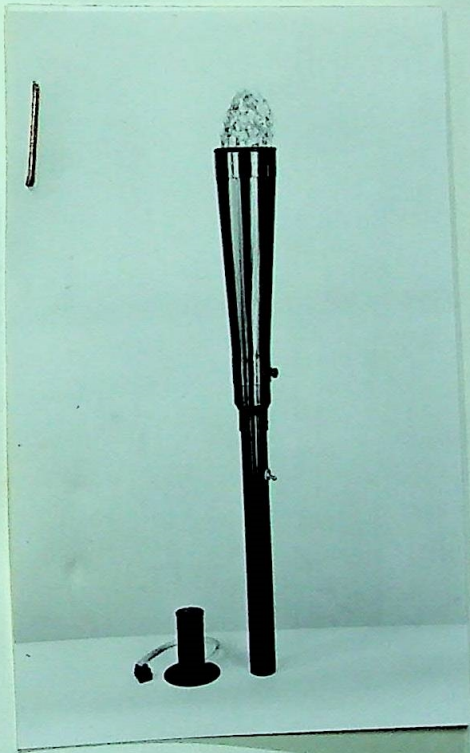
Pos. 60



205.61



205.02



Pos. 63

Descriptions on the back of pictures

Reiche & Vogel Leuchtkunst, Belin SO 36, Kottbusser Ufer 30

- 1 Fuß- bzw. Oberlicht, Kammersystem, für 150-200 Watt Lampen
- 2a Spielflächenleuchte 2000 Watt mit doppelreflektor
- 3 Spielflächenleuchte 1500 Watt mit Linse
- 4 Spielflächenleuchte 2000 Watt mit, Beleuchtungslinse 200 mm dia und gekröpftem Bügel
- 6 Horizontleuchte 1000 Watt mit Soffitte
- 8 Kegel-Horizont laterne 2000 Watt
- 9 Horizontleuchte 2000 Watt mit 4 Nitraphotlampen à 500 Watt
- 10 Horizontleuchte 1000 Watt mit 2 Nitraphotlampen à 500 Watt
- 10a Horizontleuchte 3000 Watt (Dreifachsuchte) für Nitraphotlampen à 500 Watt
- 11 Scheinwerfer für streuendes Licht, für 4 Nitraphotlampen à 500 Watt
- 12 Horizont-Versatzleuchte 1000 Watt für 2 Nitraphotlampen à 500 Watt
- 13 Glühlampen- Linsenscheinwerfer 500 Watt
- 14 Glühlampen- Linsenscheinwerfer 1000 Watt
- 14a Glühlampen- Linsenscheinwerfer 1000 Watt runde Ausführung
- 16 Glühlampen- Linsenscheinwerfer 2000 Watt
- 18 Glühlampen- Linsenscheinwerfer 5000 Watt
- 19 Linsenscheinwerfer mit automatischem Farbwechsel
- 19 Geberpult
- 19a Linsenscheinwerfer mitmagnetisch-pneumatischem Farbwechsel
- 19a Linsenscheinwerfer mitmagnetisch-pneumatischem Farbwechsel
- 20a Punkulichtvorsatz für 2000 Watt Scheinwerfer
- 20a Punkulichtvorsatz für 2000 Watt Scheinwerfer
- 20c Projektionsvorsatz für einfache Projektion
- 20d Projektionsvorsatz für 2000 Watt Scheinwerfer (mit Meniskuslinse)
- 21 Ellipsen-Spiegel-Linsenscheinwerfer 1000-1500 Watt
- 22 Scheinwerfer für streuendes Licht für 1000 Watt Nitralampe
- 23 Verfolgungsscheinwerfer 1000 Watt
- 24 Verfolgungsscheinwerfer für zwei verschiedene Brennweiten
- 25 Bogenlampen-Linsenscheinwerfer 40-60 Amp mit Panzerlampe
- 26 Bogenlampen-Linsenscheinwerfer 100 Amp
- 27 Spiegel-Bogenlampen-Scheinwerfer 25 Amp.
- 28 Projektionsscheinwerfer 5000 Watt
- 29 Handscheinwerfer 250 Watt
- 31 Niedervolt-Linsen-Scheinwerfer 250 Watt 24 Volt
- 31 Niedervolt-Linsenscheinwerfer 250 Watt 24 Volt mit verstellbarer Schlitzblende
- 32 Niedervolt-Linsen-Scheinwerfer 250 Watt 24 Volt
- 32 Niedervolt-Linsenscheinwerfer 250 Watt 24 Volt mit verstellbarer Schlitzblende
- 33 Niedervolt-Paröbolspiegel-scheinwerfer 250 Watt 24 Volt mit angebautem Trafo
- 34 Niedervolt-Paröbolspiegel-scheinwerfer 250 Watt 24 Volt
- 35 Bildwerfer 1000 Watt mit Doppelbildhalter
- 36 Bildwerfer 2000 Watt mit Doppelbildhalter
- 37 Bildwerfer 3000 Watt auf Stativ
- 38 Bildwerfer 5000 Watt auf Vierfüßstativ
- 39 Lenkspiegelvorsatz
- 40 a Veränderliches Vorsatz-Objektiv mit motorischer und Handbetätigung
- 40 b Objektiv mit veränderlicher Brennweite

- 41 Bildwerfer mit Effektscheibe
- 42 Doppeleffektscheibe
- 43 Bildwerfer mit Spiralnebeleffe ktvorsatz
- 44 Wasserwelleneffekt
- 45 Bildwerfer mit Filmlaufeffektvorsatz für lange Filme, mit Winkelkondensator
- 46 Filmlaufeffektvorsatz für kurze Filme, ca. 50 cm lg., 13 cm brt.
- 47 Panorama-Apparat
- 49 Wolkenkugel mit Motorvorgelege
- 50 Wolkenapparat mit 10 Bildwerfersystemen
- 52 UV. -Scheinwerfer
- 53a Linsenscheinwerfer mit motorischem Farbrad
- 53a Linsenscheinwerfer runde Ausführung mit motorischem Farbrad
- 54 Dirigentenpult
- 55 Notenpult
- 56 Notenpultleuchte
- 57 Taktklaviatur mit 4 Tasten
- 58 ausziehbares Dreifuss stativ
- 59 Sockelstativ
- 60 Sockelstativ mit Spindel
- 61 Steckvorrichtung bis 15 Amp.
- 62 Bühnensteckvorrichtung 60 Amp.
- 63 Fackel